



Our Top 4 Most Inspirational Custom Home Plans of All Time

By Hensley Custom Building Group


Hensley
Custom Building Group



Introduction

Section 1 Defining Your Big Picture Vision

Big Picture Vision
Your Dream Kitchen
Outdoor Living Space
Luxury Master Suite
Additional Considerations

Section 2 Our Top 4 Most Inspiring Plans of All Time

Luxury Custom Home
Lifestyle Ranch Home
Modern Farmhouse
Estate Style Home

Plans That Inspire *Introduction*



No doubt you've heard of the face that launched a thousand ships. Well, when it comes to custom homes, there are plans that people love and share, person to person. While each custom home is unique to the dreams, desires and style of the owner, there are inspiring plans that launch other plans. This book includes our four most popular plans of all time, along with tips and ideas for making your own custom home dream a reality.



Our Top 4 Most Inspiring House Plans of All Time

In Section 1 of this guide, we walk you through several key factors to keep in mind when planning your custom home. These considerations include thinking about your exterior style, your outdoor areas and more.

In Section 2, we look at four top plans and what makes them so inspirational. From multi-generational living, to the popular “downsize” ranch idea, these plans have inspired our customers and their friends and associates. We think you will quickly see why.

Section 1

Defining Your Big Picture Vision

Your Custom Home
Big Picture Vision

When planning your custom home, start by considering your home's style and size. Which of these describes your vision?

- Ranch or multi-level
- 3 or 4-car garage (or more)
- Front porch
- Brick, stone or wood exterior
- Contemporary, modern farmhouse, traditional and timeless, or another style
- A home for entertaining
- A forever home
- In a luxury community
- Away from it all



The Heart of the Home

Your Dream Kitchen

It's an all-important space, where everyone loves to gather. What's on the "must have" list for your kitchen?

- Range hood
- Two dishwashers
- Vaulted ceiling
- Double ovens
- Refrigerator drawers
- Separate refrigerator/freezer
- Wine chiller
- Apron front sink
- Prep sink
- One or two islands
- Walk-in pantry





Outside Amenities

Outdoor Living Space

Custom homes today offer a way to build an everyday escape. Some ideas to consider include:

- Pool/spa and pool house
- Firepit
- Water view
- Outdoor kitchen
- Outdoor living room
- Outdoor fireplace
- Balcony
- Screen porch
- Sport court
- Pergola
- Patio



Designing Your Custom *Luxury Master Suite*

Like the comedian Tina Fey says, your “bed is where you spend 85% of your time and eat all your meals.” Joking aside, your master suite is one of your home’s most important rooms. Consider including:

- His and hers walk-in closets
- Sitting area and fireplace
- Vaulted or tray ceiling
- Free-standing tub
- Private balcony/porch
- Morning kitchen
- Steam shower
- Seated vanity
- Heated floors
- French doors



Your Custom Home

Additional Considerations

From finishes to fixtures, you get to choose all the details of your custom home. Throughout the process, the Hensley team will guide you in making the perfect selections on items like:

- Custom finishes such as reclaimed wood
- Barn door and other decorative touches
- Custom cabinetry
- Unique lighting fixtures
- Appliances
- Window styles
- Countertops
- Flooring
- And much more



Section 2

Our Top 4 Most Inspirational Plans

Discovering Your Dream Home Plan

Look Inside the Plans



The following four plans are some of our most popular of all time. We have chosen plans that represent each of the four categories that are most important to our customers today.



- Luxury Custom Home – Designing for your best life in a home 100% suited to your lifestyle.
- Downsizing Home – While downsizing can mean living with less, to our clients it often entails simply planning ahead. It represents a smart choice of single-floor living and a “less maintenance” life for years to come.
- Forever Family Home – Building a home around an active family is the goal of many of our clients.
- Estate Home – Want to get away from it all? An estate home lets you build your home your way going with the lay of the land for inspiration.



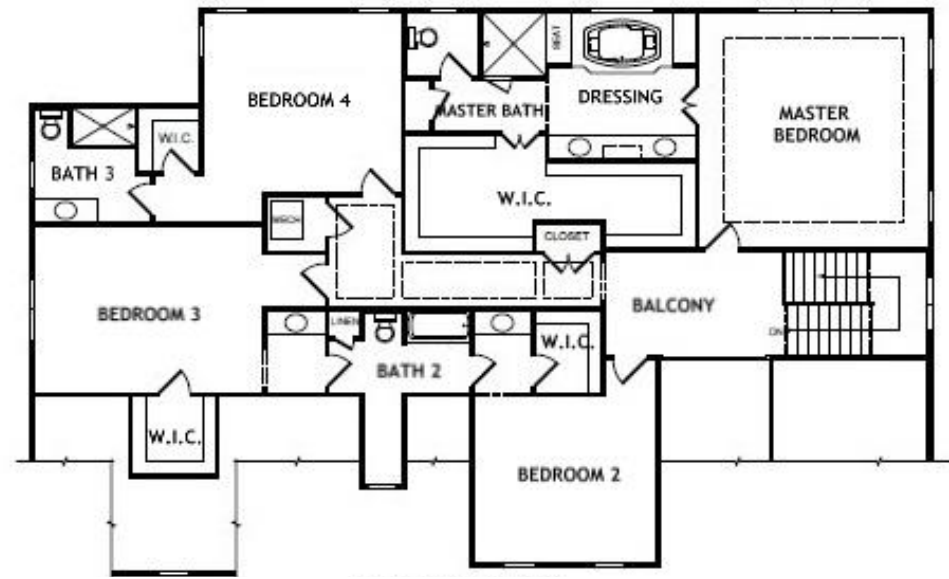
Long Cove Style
Luxury Home

A center gable set off with stone and a bay window give this three-level home charm and curb appeal right from the start.

Step through the double doors and be welcomed by a gracious foyer. Straight ahead is a great room with coffered ceiling that's warmed by a fireplace and open to the kitchen.

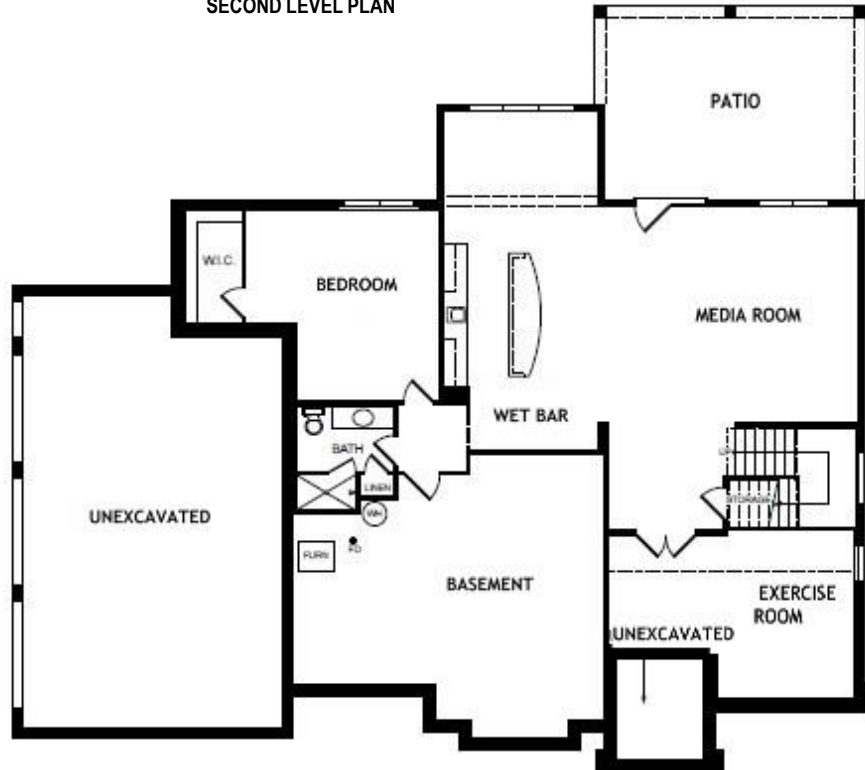
With five bedrooms and four and half baths, this home also offers a formal dining room and luxurious master suite. A library, home office, first-floor laundry, mudroom and three-car garage cater to your every need.

The lower level wows with a media room, home gym, patio and wet bar.

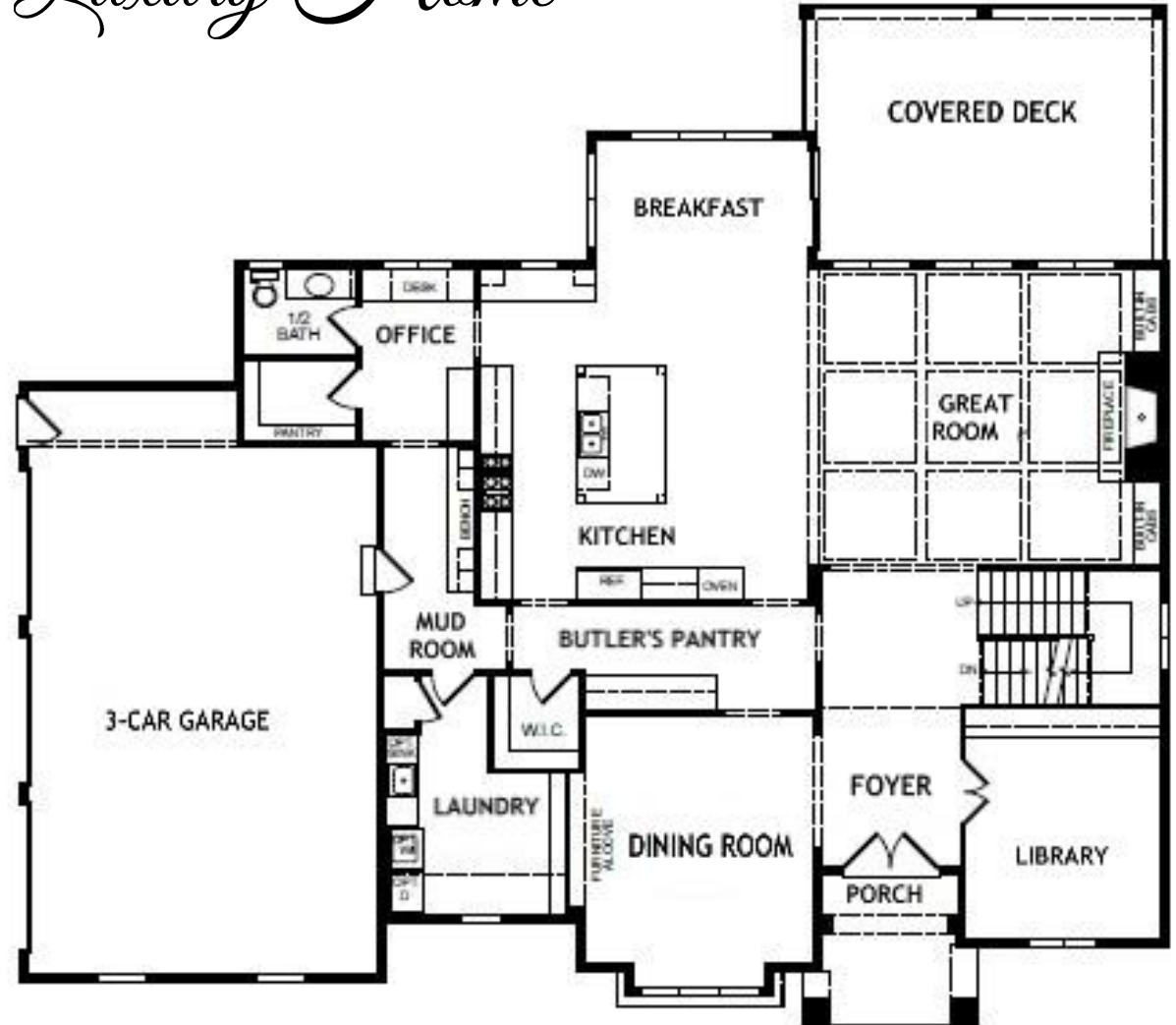


SECOND LEVEL PLAN

H
Hensley
 Custom Building Group
Luxury Home



FINISHED LOWER LEVEL



FIRST FLOOR PLAN



Downsize or Right Size

Lifestyle Ranch

Perfect for one-level living, this home design makes all the essentials convenient, while still providing plenty of space to entertain and host family and friends.

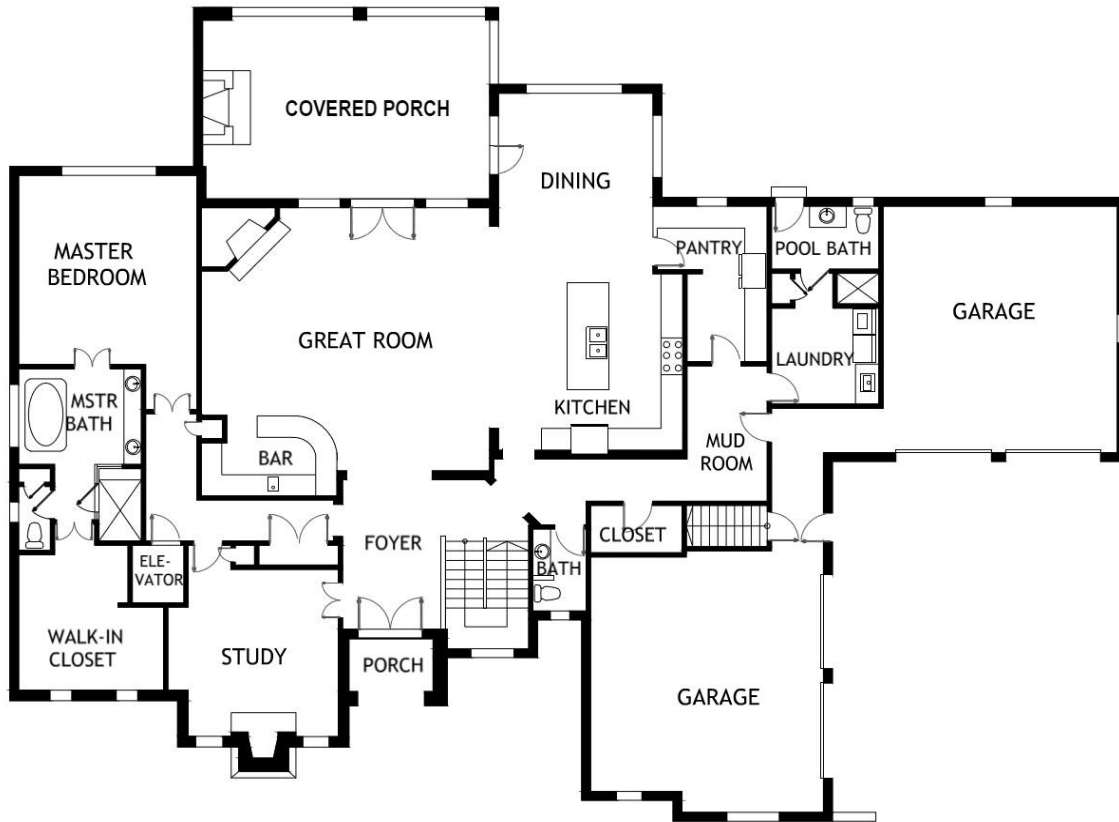
At the heart of the home is a gourmet kitchen. It's open to the soaring great room, complete with a corner fireplace. Outdoor living is easy with a covered porch that features a fireplace.

A quiet retreat, the master suite offers a pampering spa-like bath, oversized closet and a beautiful study just steps away.

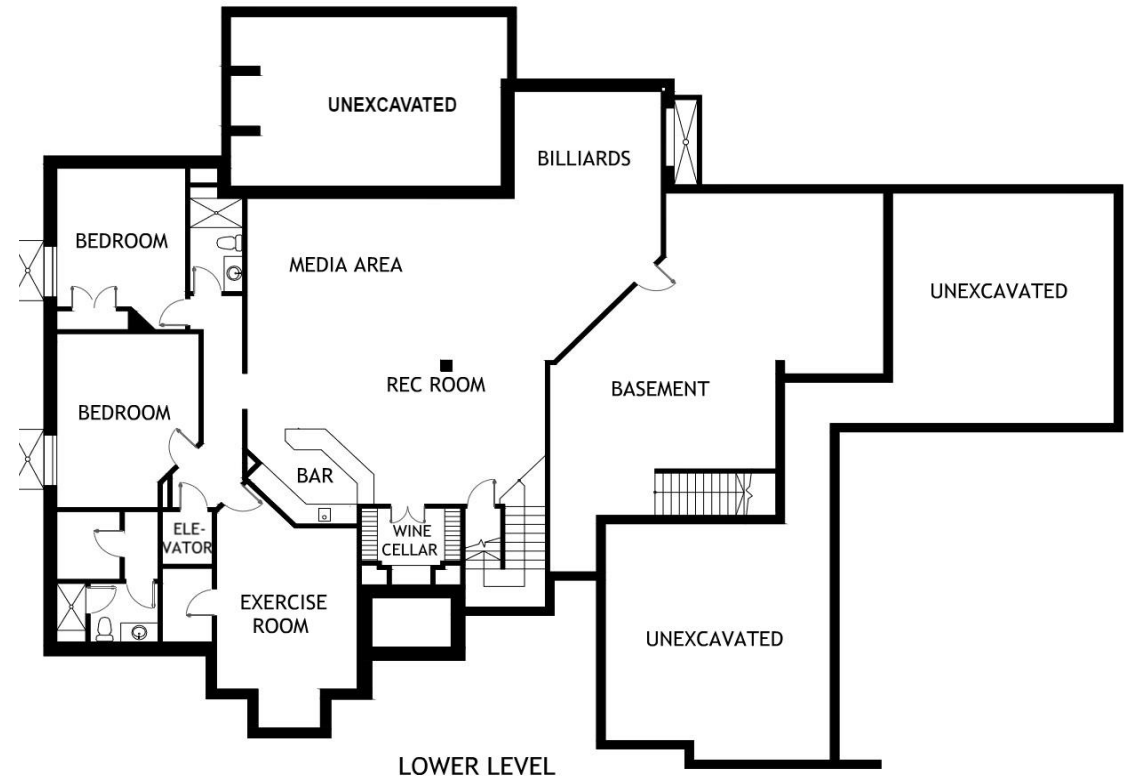
Guests will enjoy their own bedrooms with private baths in the lower level. You'll love the wine cellar, wet bar, and media room. There's even space to include an elevator.



Lifestyle Ranch



FIRST FLOOR PLAN



LOWER LEVEL



Forever Home for Family

Modern Farmhouse

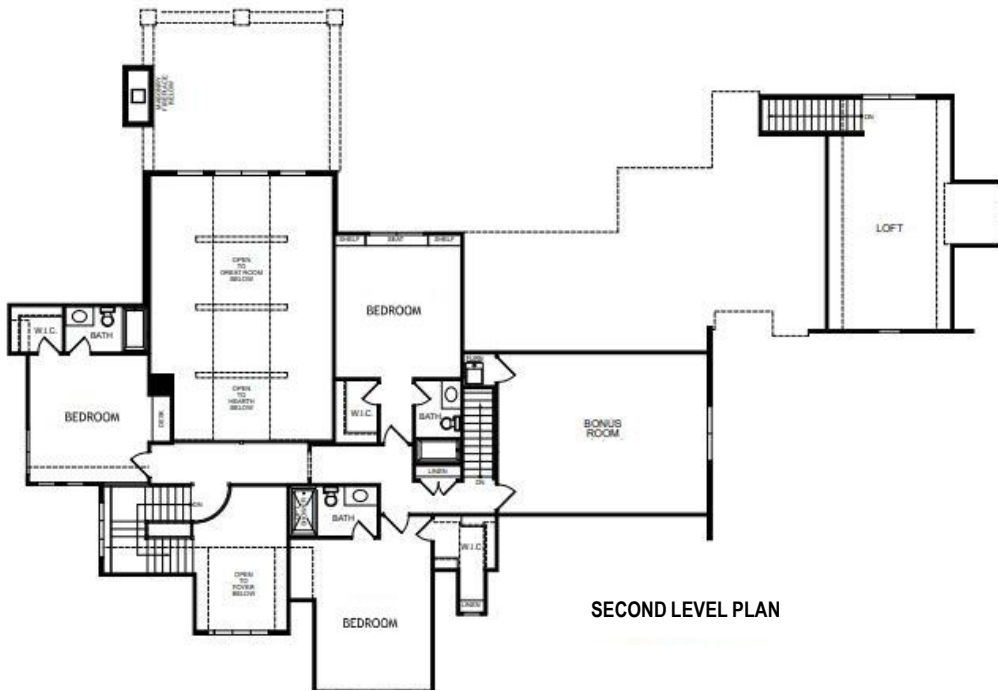
A two-sided stone fireplace anchors the open living space in this special home. Designed to fit a family of four and frequent gatherings with friends, the plan features a spacious open kitchen, a separate dining space and easy access to outdoor spaces.

A walk-in pantry, oversized mud/laundry room, five-car garage, bonus space over the garage and generous recreation space make life as an active family easy and enjoyable.

The first-floor master suite is mom and dad's refuge, complete with double walk-in closets, beamed ceilings and a wall of windows that fills the space with light.

Just steps from the covered deck is a patio outfitted with a firepit for evenings spent together under the stars.

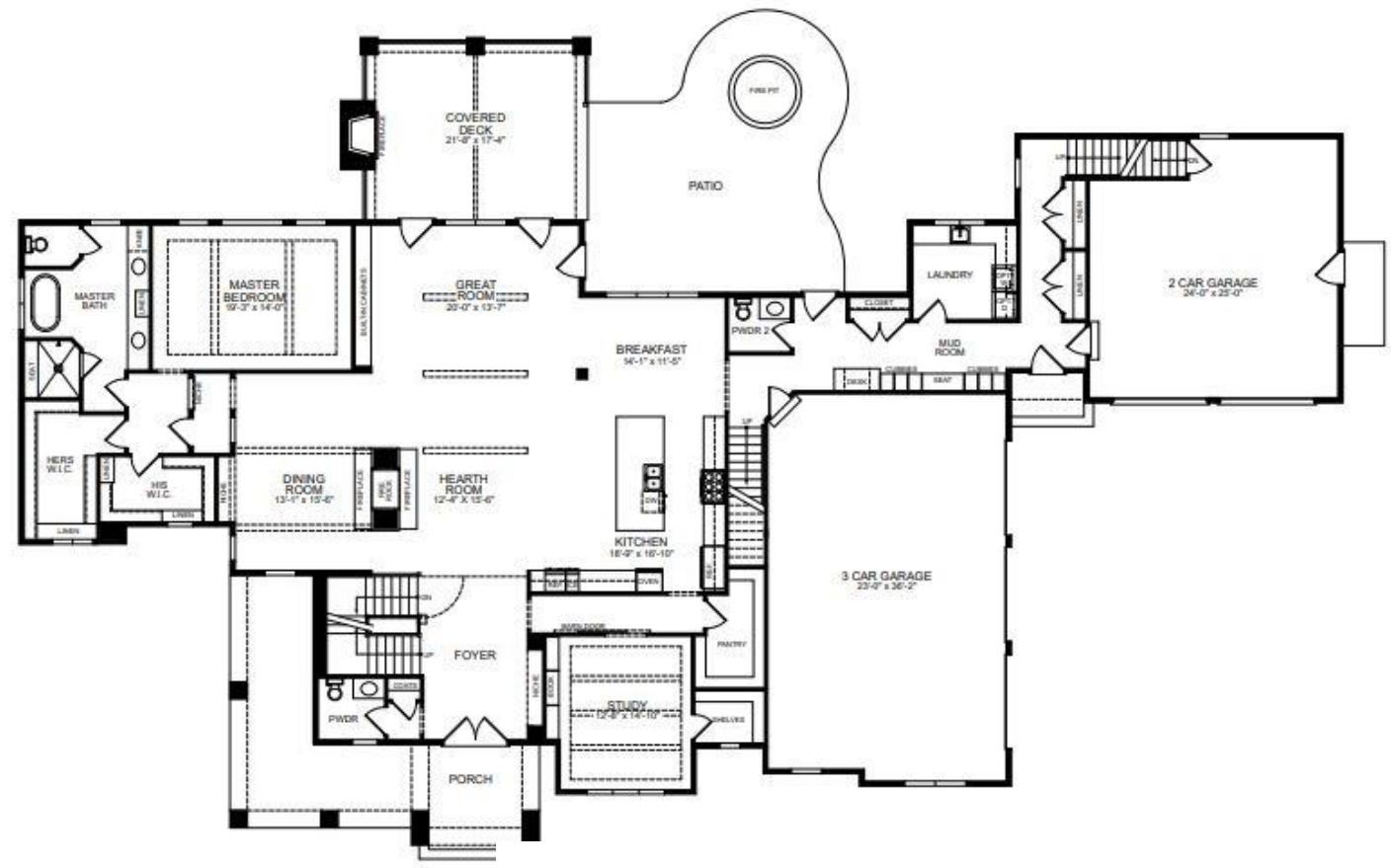
Modern Farmhouse



SECOND LEVEL PLAN



LOWER LEVEL PLAN



FIRST FLOOR PLAN



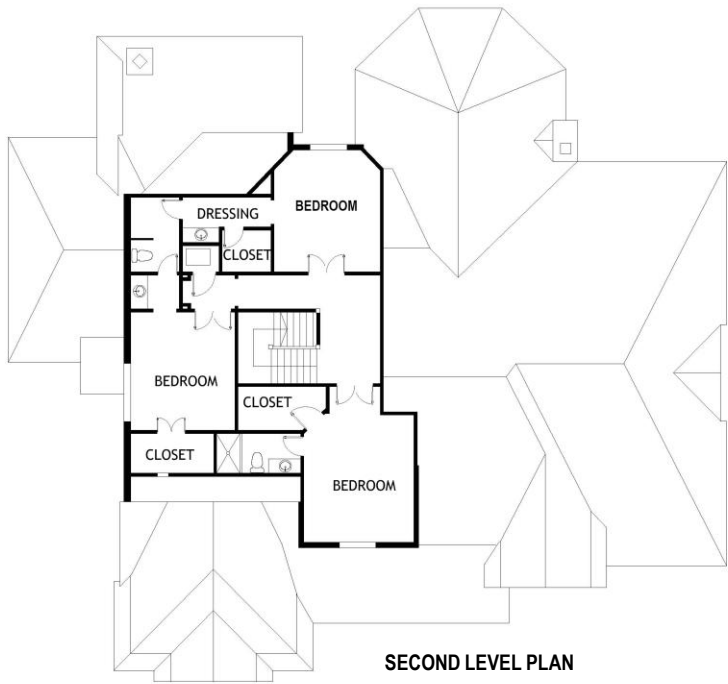
Indian Hill Style
Estate Home

This exquisite home provides the best in both formal living and more intimate spaces. Greet guests in the foyer, which opens to a truly great room, dining room, pub and library. Family feels at home in the chef's kitchen, breakfast area and hearth room, complete with corner fireplace.

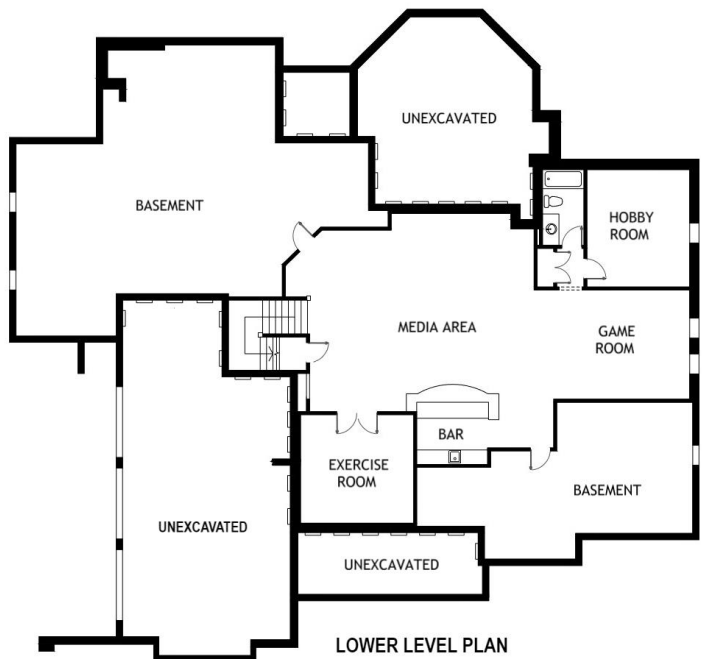
The first-floor master suite includes a bedroom with tray ceiling, a spacious bathroom and a gracious walk-in closet with center island.

Upstairs, a balcony opens to three bedrooms with beautifully appointed baths.

The covered porch is party-central, with a fireplace, access to the patio and view out over a yard perfect for a pool and spa.

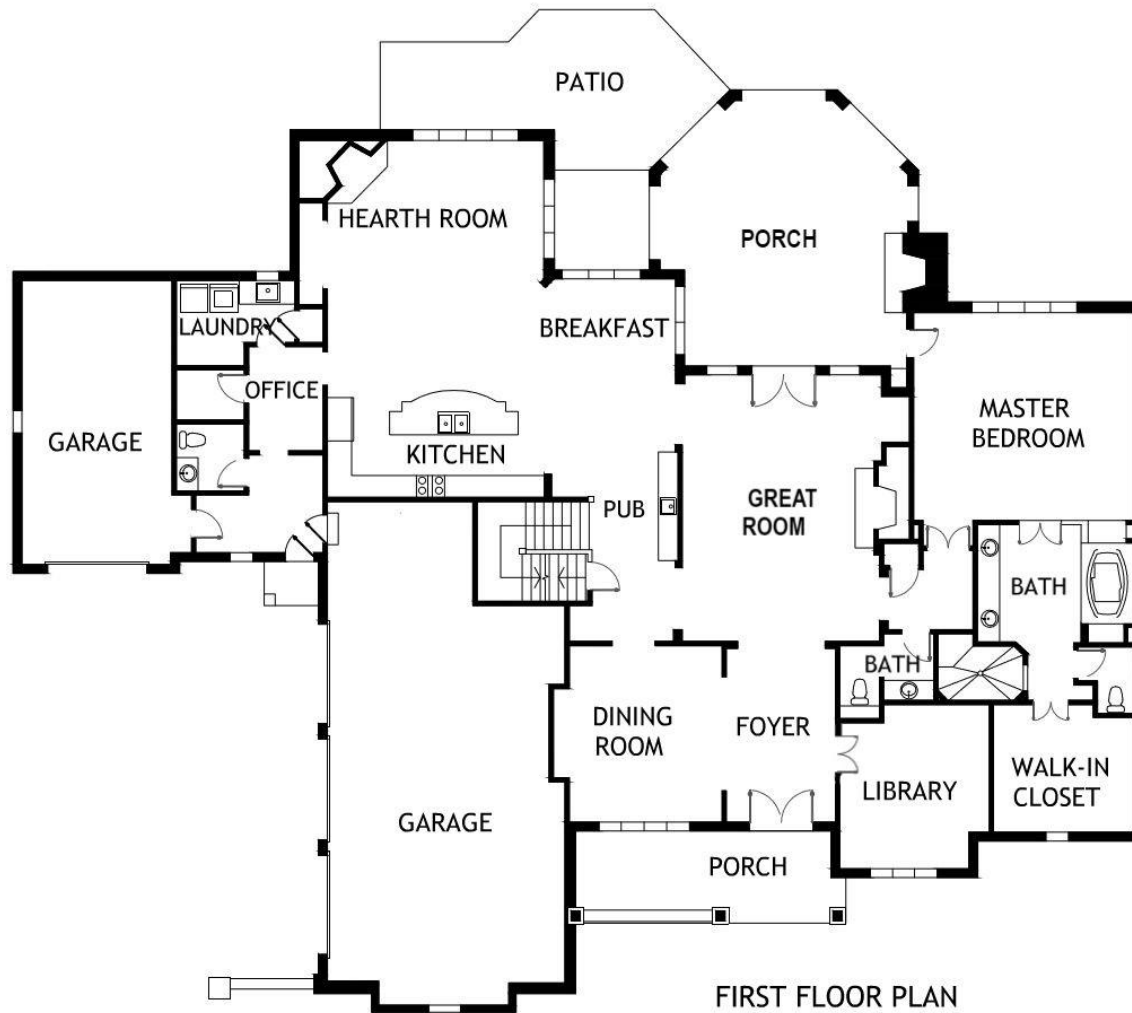


SECOND LEVEL PLAN




LOWER LEVEL PLAN

H
Hensley
 Custom Building Group
Estate Home



FIRST FLOOR PLAN



Thank you for downloading this guide. We pride ourselves on truly custom homes, unique to each individual client.

Contact us to start your dream home plans.

John@HensleyHomes.com
513-509-5010

Start the conversation: Schedule a 15-minute call with John at HensleyHomes.com/Contact